

Severe Calcified Vessels with the OneLIF™ Interbody Fusion Device

Surgeons avoid contact with calcified vessels by leveraging an oblique cage insertion option and unique screw trajectories.

Sigurd Berven, MD

Rafid Kasir, MD

UCSF Medical Center, San Francisco, CA

A 71-year-old male presented with a history of degenerative disc disease, coronary artery disease, atherosclerosis, and calcified vessels (iliolumbar vein).

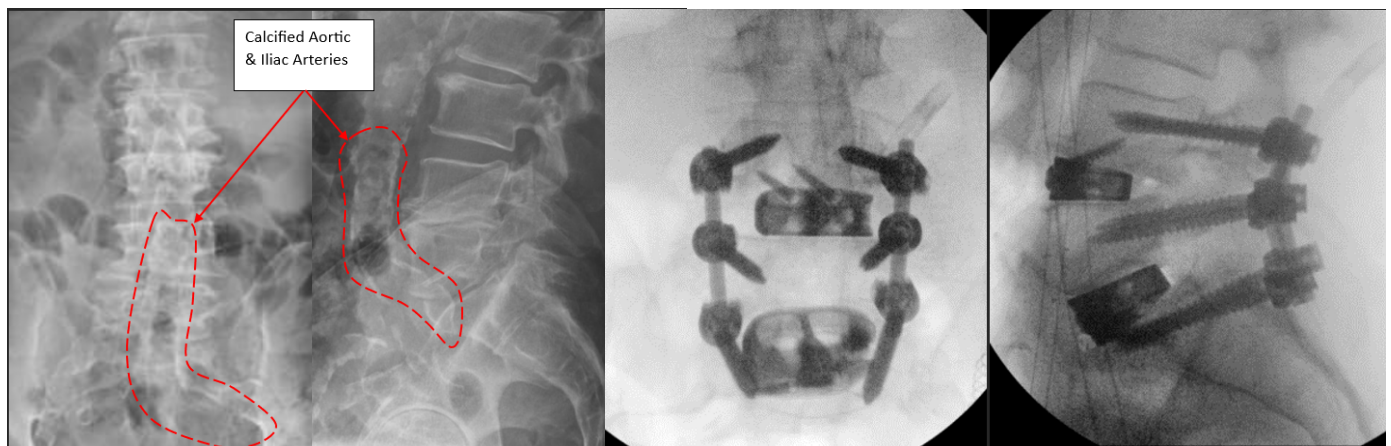
Procedure

The surgeons, in this case, used a single ALIF incision to provide access to L4-5 and L5-S1. The surgeons used the OneLIF™ device's oblique inserter hole which, in this case, limited contact with the patient's calcified iliolumbar vein. For this case, the surgeons did not need to take segmentals or mobilize the iliolumbar vein. Posterior fixation was performed following implantation of the OneLIF devices.

Implants Used

4-5 = Medium Cage - 13° x 8mm Posterior Height (Bone Screws placed in Anterior screw holes)

5-1 = Large Cage - 19° x 8mm Posterior Height (Bone Screws placed in Anterior screw holes)



Discussion

Spinal patients with arteriosclerosis can present challenges for the surgical team performing anterior lumbar interbody spinal fusion. The surgeons noted that, during this case, the OneLIF cage's oblique inserter attachment point, enabled a surgical pathway that avoided the left iliolumbar artery which the surgeons believed minimized mobilization or resection of the segmentals. Additionally, the surgeons noted that, during this case, the OneLIF cage's unique 'oblique' screw trajectories minimized vessel retraction.



NovApproach Spine markets devices for sale in the U.S. by prescription only. NovApproach Spine does not practice medicine or provide medical advice. NovApproach Spine does not make any claims related to efficacy, safety, complication rate, or potential outcomes. Individual results may vary. NovApproach Spine does not provide any expressed or implied warranties.

For more information, please contact a NovApproach Spine Product Manager or Customer Service Representative today at: NovApproach Spine, LLC, 13900 Tech City Circle Suite 300, Alachua, FL 32615. Phone: 386-588-3408. Email: Inquiry@novapproachspine.com

D01-F6-0002 Ver 2